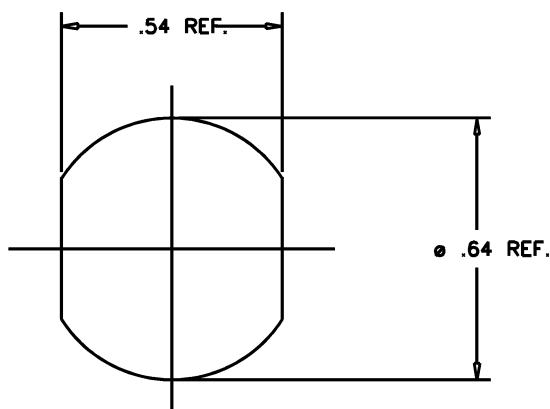
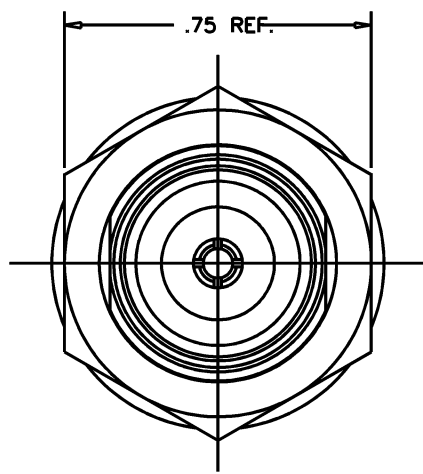
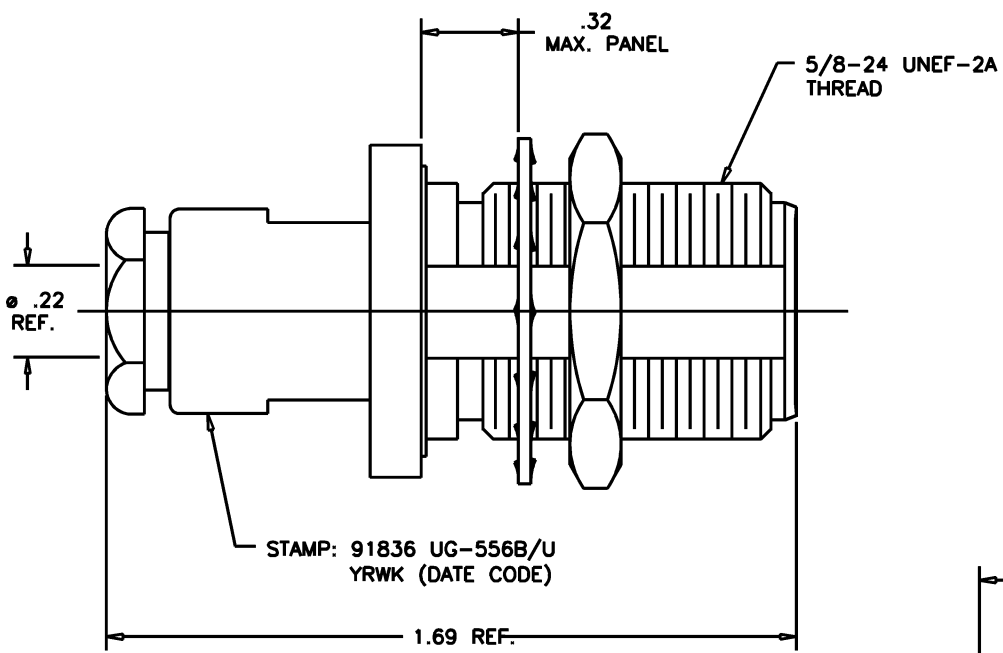


DASH NO.	M CODE	MADE FROM
----------	--------	-----------

GSD

UG-556B/U

REVISIONS	
ISSUE	CHANGES
1	CN 551 C 09/11/63
2	CN 4319 A AT 07/08/66
3	CN 13199 C JL 04/17/74
4	CN 13369 A GA 04/26/74
5	CN 23094 C MA 02/24/82
6	CN 39468 C REDRAWN JPK 05/15/06



MOUNTING HOLE

GSD

UG-556B/U SD

SCALE 3 : 1

APPROX SURFACE AREA N/A

USED ON

REF: REB 49378A

N BULKHEAD JACK

DRAWN J. KENNEDY DATE 05/15/06

DESIGN PETE DATE 09/28/59

APPR. DATE



UG-556B/U

NOTES:

- FOR USE WITH RG-55, 59, 141, 142 AND 223/U CABLE GROUPS.
- INTERFACE PER MIL-STD-348, FIG. 304.2.
- MATERIALS:
 - CENTER CONTACT: BERYLLIUM COPPER, ASTM-B196
 - LOCKWASHER: PHOSPHOR BRONZE, ASTM-B103
 - WASHER: BRASS, ASTM-B36
 - ALL OTHER METAL PARTS: BRASS, ASTM-B16
 - GASKETS: SILICONE RUBBER, A-A-59588
 - INSULATOR: TEFLON, ASTM-D4894
- FINISHES
 - ALL METAL PARTS: SILVER PLATE, ASTM-B700
- ELECTRICAL CHARACTERISTICS:
 - NOMINAL IMPEDANCE: 50 OHMS
 - FREQUENCY RANGE: DC - 11 GHz
 - VOLTAGE RATING: 1000 VRMS